

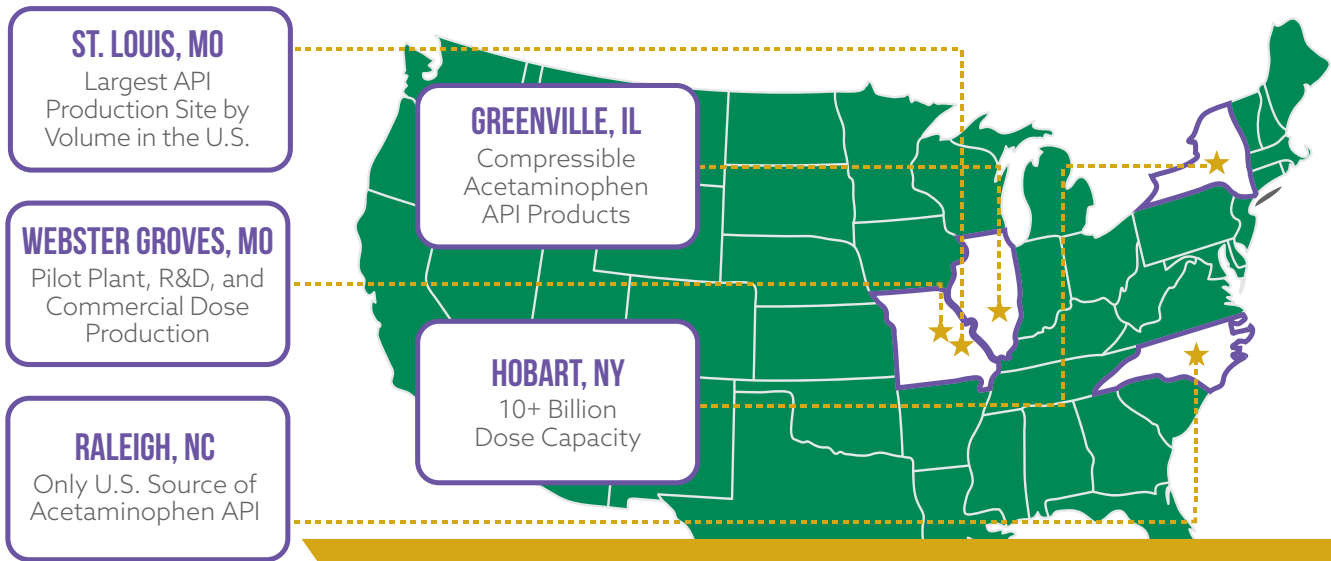


Mallinckrodt
Specialty Generics

Strengthen Our Nation's Healthcare Security by Reducing Our Dependency on Foreign Sources for Essential Medicines

MORE THAN 1.6K U.S. BASED EMPLOYEES ACROSS 5 LOCATIONS

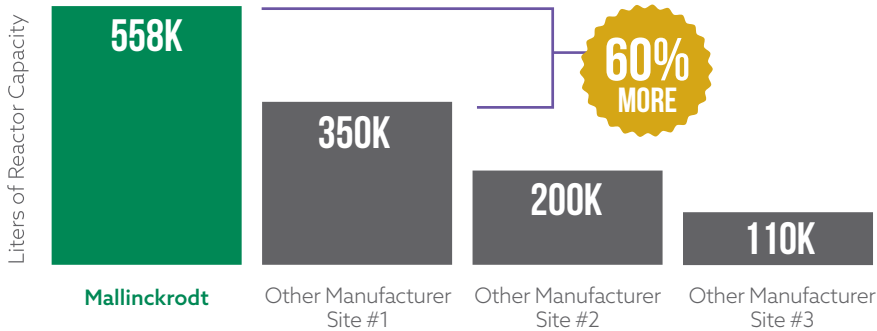
Manufacturing Active Pharmaceutical Ingredients (APIs) and Finished Dose Medicine



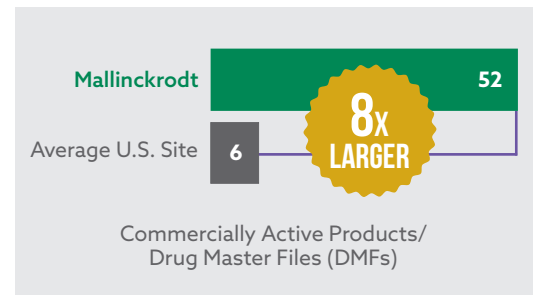
THE LOGICAL, CAPABLE PARTNER TO RE-SHORE ESSENTIAL MEDICINES

LARGEST API PRODUCER IN THE U.S.

60% Greater Volume than the Next Biggest U.S. API Site



8x Larger API Mix than the Average Domestic API Manufacturing Site



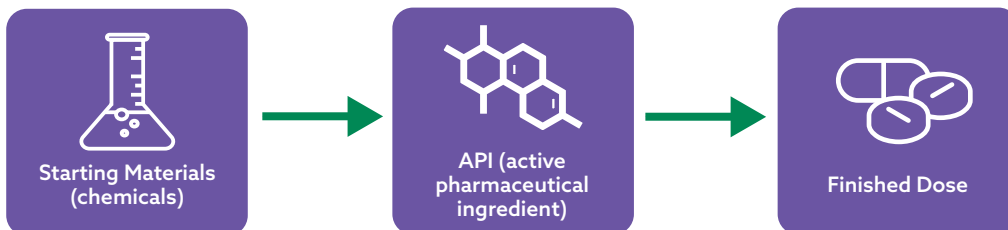
READY TO RESPOND
NOW

- Our **portfolio** - which is one of the Nation's most diverse - can be **immediately** expanded to introduce other essential medicines.
- Our **spare capacity** - which exceeds the total capacity of the average manufacturing site in the U.S. - can be **repurposed now** to manufacture critical medicines.

GLOBAL COMPETITIVENESS

MADE POSSIBLE WITH MALLINCKRODT'S
U.S. BASED END-TO-END MANUFACTURING NETWORK

THE ONLY **LARGE-SCALE** DOMESTIC MANUFACTURER VERTICALLY INTEGRATED FROM...



BENEFITS OF END-TO-END MANUFACTURING



SECURITY

- **Enhanced national healthcare security**, independent of foreign supply chain
- Reliable and **seamless management** of the end-to-end manufacturing process



SPEED TO MARKET

- Fully integrated network capable of **end-to-end product** development and manufacturing
- Readily **available** facilities for **immediate expansion** to meet the nation's critical needs



SCALABILITY

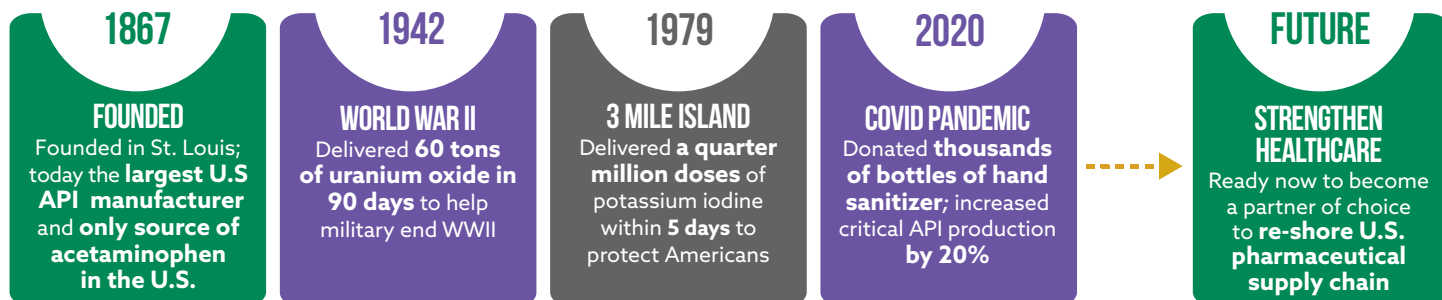
- Lab to industrial scale: **5 grams to 25,000 tons**
- One of the **most flexible** API sites in the nation



PERFORMANCE

- **Award-winning** manufacturing facilities
- 150 year record of **superior customer service**

RESPONDING IN TIMES OF CRISIS



Mallinckrodt, the "M" brand mark, and the Mallinckrodt Pharmaceuticals logo are trademarks of a Mallinckrodt company. Other brands are trademarks of a Mallinckrodt company or their respective owners. Manufactured by SpecGx LLC. ©2020 Mallinckrodt. 09/20 10004956

385 Marshall Avenue, Webster Groves, MO 63119 | 800-895-9048 | www.mallinckrodt.com